



Advanced MS Paint

Class notes

Class-3

MS paint :-

MS Paint can be used to draw, colour and edit pictures.

Some features of MS Paint:-

Colour picker tool

The colour picker tool help us to pick colour from on part of the figure and fill the same colour in any other part of the drawing.



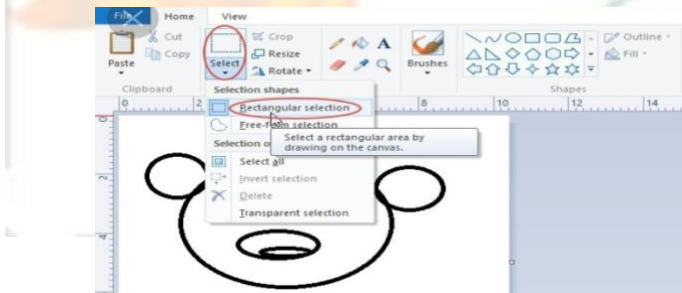
Magnifier tool

Tool is used to zoom in and zoom out on a part of a drawing.



Selection tool:-

Selection tool are used to select drawing or a part of a drawing from and

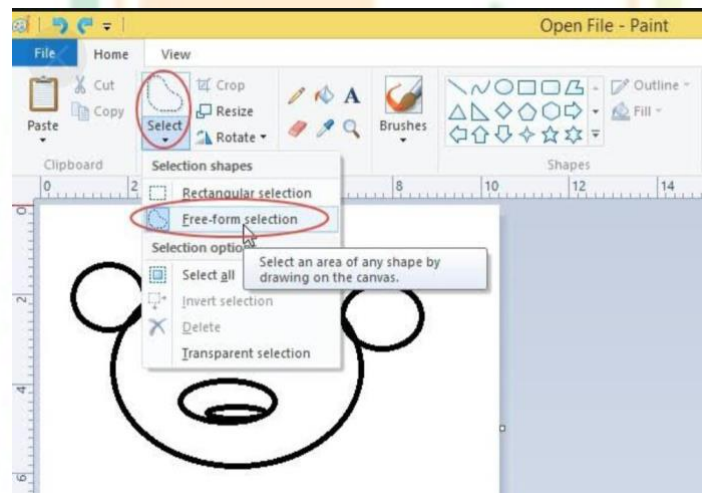


perform various operation on the selected part like cut , copy, resize and rotate/flip.

Rectangular selection tool this tool is used to select a rectangular shaped area of an image.

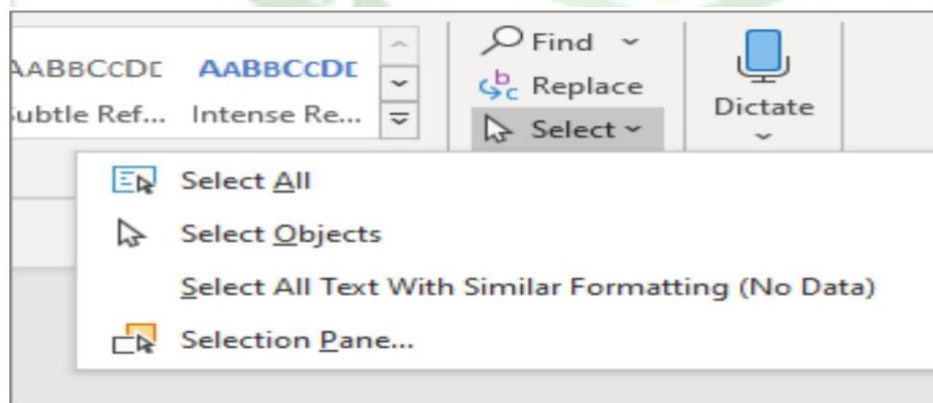
Free from selection tool:-

The free-from selection tool is used to select an irregular area of a drawing.



Select all tool:-

This tool is used to select the entire drawing.



Moving the selection:-

The selected part can be dragged to a new location.

Copy and paste selection:-

The selected part can be copied and pasted to a new location.

Cut and paste the selection:-

The selected part can be cut and paste to the new location.

Resize the selection

The selected part can be resized (increase and decrease) . Resize means to change its actual size.

Rotate and flip tool:-

This tool is used to rotate the whole drawing or selected part of a drawing.

