



# LITTERA PUBLIC SCHOOL

CLASS- III

COMPUTER

## CHAPTER 5

### Fun with LOGO

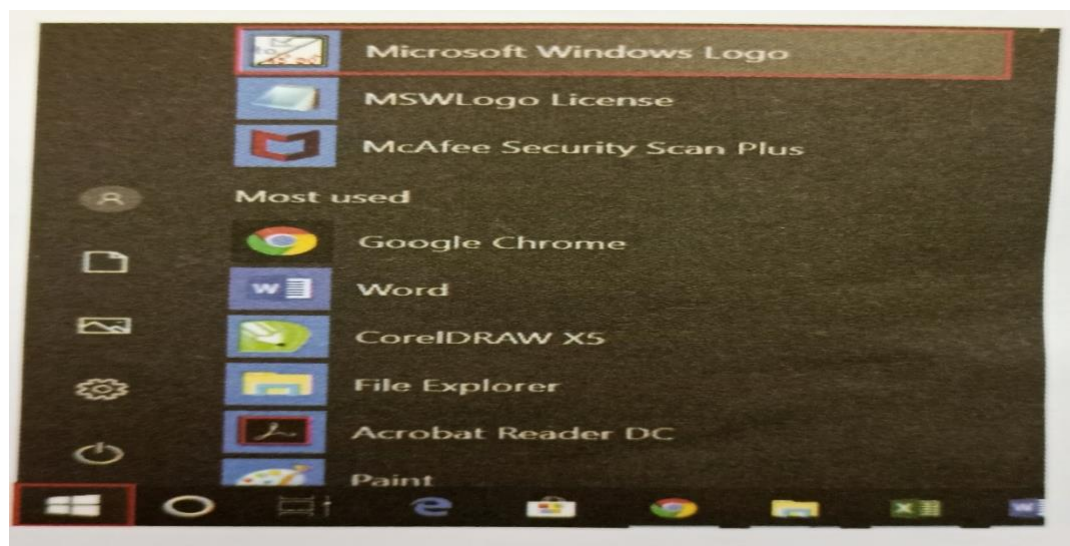
A computer does not understand any of the language that we speak. We need to instruct the computer in a special language. LOGO is on such language which is used to interact with a computer. It is very simple computer language through which various functions like :- drawing pictures , displaying text, doing calculation, etc.

Various versions of LOGO are available.

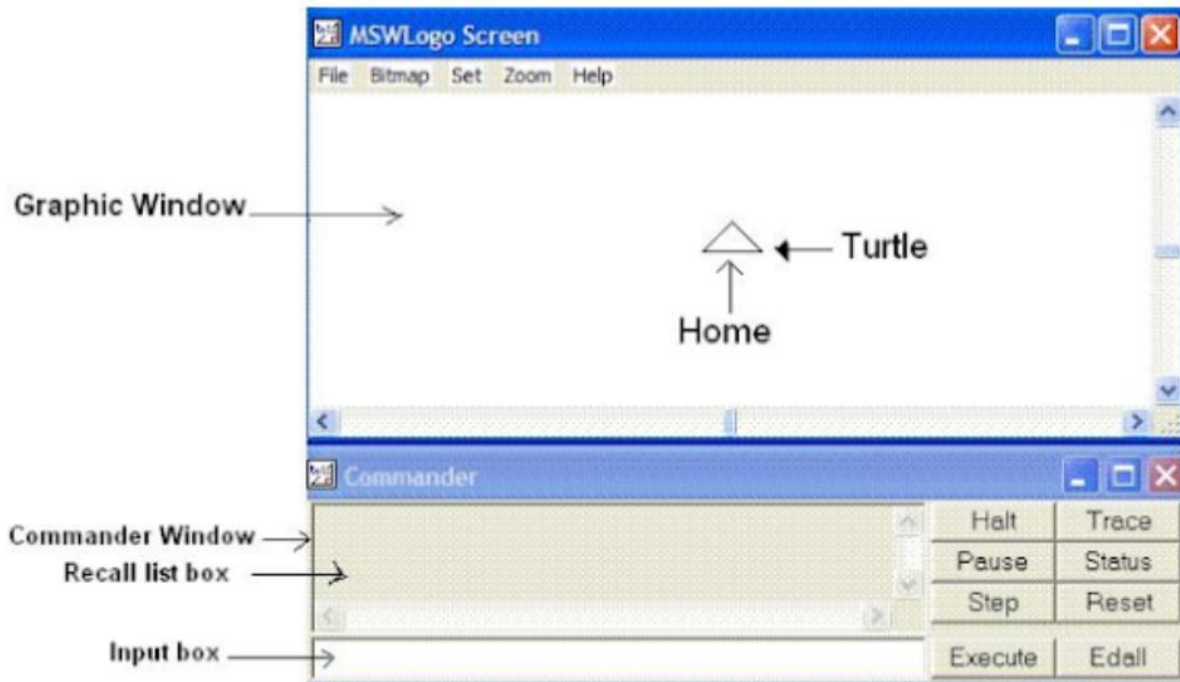
### Starting MSW LOGO

### MSW LOGO Windows

Ms LOGO screen has 2 parts: Graphic Screen and Commander Window.

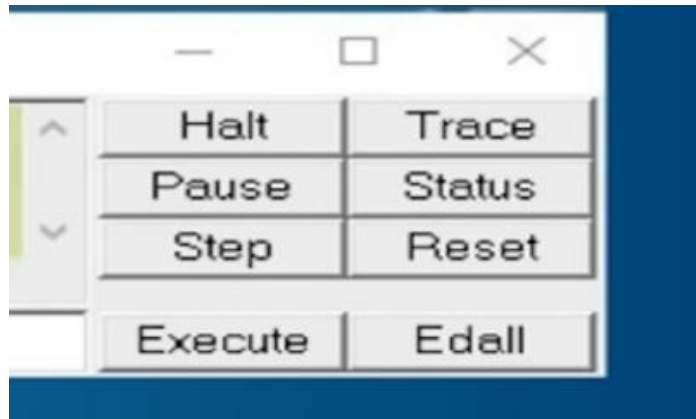


**1. Graphic (Main) screen:-** The blank space in the middle of the window is the Main or Graphic Screen. Where we can see the drawn pictures.



**2. Commander Window:** Just under the Main or Graphic screen we will find the Commander Window. The different components of the Commander Window are :-

- a. Recall list box
- b. Command Input box
- c. Control buttons:- the buttons on the right side of the Recall List box are called Buttons.



### Basic Commands

The instructions that we give to a computer are called commands. These commands are called **Primitives** and they do special kind of tasks.

#### Forward commands {FD}

The Forward or FD command is used to move the turtle forward in the direction in which it pointing.

#### Back Command {BK}

The BACK or BK command is used to move the turtle in the direction opposite to which it is pointing.

#### Right command

The RIGHT or RT command is used to turn the turtle toward its right side.

#### Left command {LT}

The LEFT or LT command is used to turn the turtle toward its left side.

#### Home Command

The HOME command is used to bring the turtle back to its starting/center position.

#### Clearscreen Commands {CS}

The Clearscreen or CS command clears the contents or drawing on the screen and brings the turtle back to the home/center/starting position.

**Cleartext Command { CT }**

**The cleartext or CT command is used to clear the text from the Recall List Box.**

**Existing LOGO {Bye Command}**

**After completing the work, close the LOGO window.**

**The steps to close the LOGO window are:**

- 1. Click on the File menu.**
- 2. Click on the Exit option.**

Thank  
you

